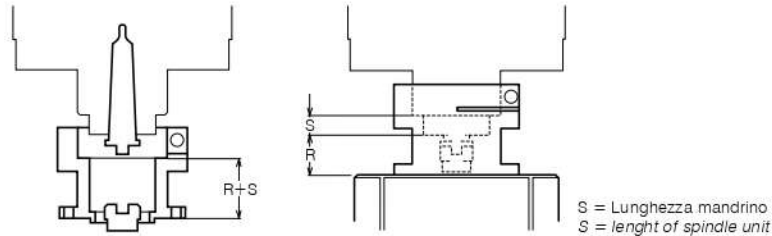




**TESTE MULTIMANDRINO AD INTERASSE REGISTRABILE PER LAVORAZIONI PESANTI
MULTIPLE HEADS WITH ADJUSTABLE CENTRE DISTANCE FOR HEAVY DUTY**

APPENDICE TECNICA
TECHNICAL SUPPLEMENT

APPLICAZIONE MOUNTING INSTRUCTION



**TESTE TIPO MINI 1 - MINI 2 - MINI 3 - MINI 3L - MINI 4
HEADS TYPE MINI 1 - MINI 2 - MINI 3 - MINI 3L - MINI 4**

| CODICE TRASCINATORE DRIVER CODE | CONO MORSE MORSE TAPER | CONO DIN 238 TAPER DIN 238 | MANDRINO DIN 55058 SPINDLE DIN 55058 | R |
|------------------------------------|---------------------------|-------------------------------|---|------|
| 415101.008 | 1 | | | 32 |
| 415102.008 | 2 | | | 33.5 |
| 415103.008 | 3 | | | 28.5 |
| 415210.008 | | B10 | | 32 |
| 415212.008 | | B12 | | 33 |
| 415216.008 | | B16 | | 30.5 |
| 415218.008 | | B18 | | 33.5 |
| 415316.008 | | | 16 | 23 |
| 415320.008 | | | 20 | 23 |

**TESTE TIPO 801M - 801 - 803 - 812 - 811 - 801/7 - 802M - 802 - 807 - 806 - 804 - 805 - 802/7
HEADS TYPE 801M - 801 - 803 - 812 - 811 - 801/7 - 802M - 802 - 807 - 806 - 804 - 805 - 802/7**

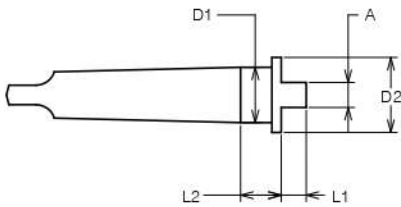
| CODICE TRASCINATORE DRIVER CODE | CONO MORSE MORSE TAPER | CONO DIN 238 TAPER DIN 238 | MANDRINO DIN 55058 SPINDLE DIN 55058 | R |
|------------------------------------|---------------------------|-------------------------------|---|------|
| 415101.008 | 1 | | | 32 |
| 415102.008 | 2 | | | 33.5 |
| 415103.008 | 3 | | | 28.5 |
| 415104.008 | 4 | | | 28 |
| 415210.008 | | B10 | | 32 |
| 415212.008 | | B12 | | 33 |
| 415216.008 | | B16 | | 30.5 |
| 415218.008 | | B18 | | 33.5 |
| 415224.008 | | B18 | | 35 |
| 415316.008 | | | 16 | 23 |
| 415320.008 | | | 20 | 23 |
| 415328.008 | | | 20 | 24.5 |

**TESTE TIPO 115PM - 115P - 116P - 117P - 115 - 116 - 117
HEADS TYPE 115PM - 115P - 116P - 117P - 115 - 116 - 117**

| CODICE TRASCINATORE DRIVER CODE | CONO MORSE MORSE TAPER | CONO DIN 238 TAPER DIN 238 | MANDRINO DIN 55058 SPINDLE DIN 55058 | R |
|------------------------------------|---------------------------|-------------------------------|---|------|
| 415103.012 | 3 | | | 35.5 |
| 415104.012 | 4 | | | 37 |
| 415105.012 | 5 | | | 30 |
| 415224.012 | | B24 | | 37 |
| 415320.012 | | | 20 | 25 |
| 415328.012 | | | 28 | 26.5 |
| 415336.012 | | | 36 | 26.5 |

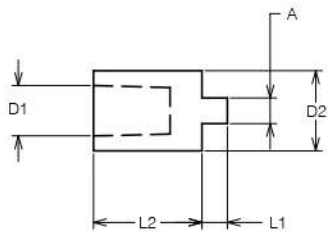


TRASCINATORI IN CM MORSE TAPER DRIVERS



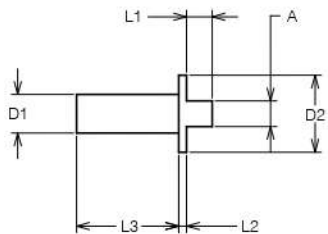
| CODICE CODE | D1 | D2 | A | L1 | L2 |
|----------------|----|----|----|----|------|
| 415101.008 | 1 | 24 | 8 | 8 | 11,5 |
| 415102.008 | 2 | 24 | 8 | 8 | 13 |
| 415103.008 | 3 | 24 | 8 | 8 | 8 |
| 415104.008 | 4 | 24 | 8 | 8 | 7,5 |
| 415105.008 | 5 | 24 | 8 | 8 | 7,5 |
| 415102.012 | 2 | 34 | 12 | 10 | 13 |
| 415103.012 | 3 | 34 | 12 | 10 | 13 |
| 415104.012 | 4 | 34 | 12 | 10 | 14,5 |
| 415105.012 | 5 | 34 | 12 | 10 | 7,5 |

TRASCINATORI IN CONO DIN 238 DIN 238 TAPER DRIVERS



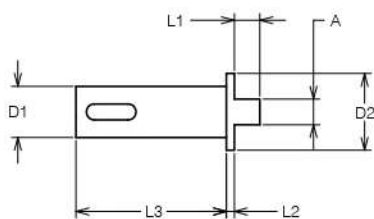
| CODICE CODE | D1 | D2 | A | L1 | L2 |
|----------------|-----|------|----|----|----|
| 415210.008 | B10 | 24 | 8 | 8 | 26 |
| 415212.008 | B12 | 24 | 8 | 8 | 31 |
| 415216.008 | B16 | 25 | 8 | 8 | 34 |
| 415218.008 | B18 | 29 | 8 | 8 | 45 |
| 415224.008 | B24 | 34,5 | 8 | 8 | 65 |
| 415218.012 | B18 | 29,5 | 12 | 10 | 45 |
| 415224.012 | B24 | 38 | 12 | 10 | 65 |

TRASCINATORI PER MANDRINI A PINZA DRIVERS FOR COLLET SPINDLE



| CODICE CODE | D1 | D2 | A | L1 | L2 | L3 |
|----------------|----|----|---|----|-----|----|
| 415410.008 | 10 | 24 | 8 | 8 | 2,5 | 25 |
| 415412.008 | 12 | 24 | 8 | 8 | 2,5 | 32 |

TRASCINATORI PER MANDRINI DIN 55058 DRIVERS FOR DIN 55058 SPINDLE



| CODICE CODE | D1 | D2 | A | L1 | L2 | L3 |
|----------------|----|------|----|----|-----|------|
| 405312.008 | 12 | 24 | 8 | 8 | 2,5 | 35,5 |
| 405316.008 | 16 | 24 | 8 | 8 | 2,5 | 47 |
| 405320.008 | 20 | 24 | 8 | 8 | 2,5 | 47 |
| 405328.008 | 28 | 32 | 8 | 8 | 4 | 52 |
| 405336.008 | 36 | 39,5 | 8 | 8 | 4 | 59 |
| 405316.012 | 16 | 24 | 12 | 10 | 2,5 | 47 |
| 405320.012 | 20 | 29 | 12 | 10 | 2,5 | 47 |
| 405328.012 | 28 | 34 | 12 | 10 | 4 | 52 |
| 405336.012 | 36 | 39,5 | 12 | 10 | 4 | 59 |