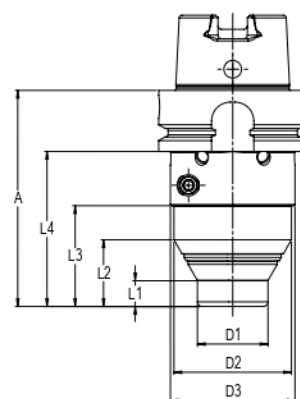


# HSK

## Precision Chuck APC, DIN 69893 (ISO 12164) with fine balancing holes 6xM6

Easy exchange of tools by setting of hex-key (see page 49). Maintenance free.  
Sealed against coolant and contamination. Slow collet taper angle. Collet with special coating (see page 36–47). System-Runout-Accuracy 3 µm at 2,5 x D.  
Clamping of tool shanks according to DIN 1835 A, B and DIN 6535 HB, HA.  
Coolant tubes see page 83.



### APC 14

HSK50 A		2 – 14 mm									
A	Part.No.	Form	L1	L2	L3	L4	D1	D2	D3	Balanced	kg
101	300 014Z 650 0	A	11	28	43	75	30	50	53	20.000 G=2,5	1,1
HSK63 A											
92	300 014Z 663 0	A	11	28	43	66	30	50	53	20.000 G=2,5	1,3



HSK50 A		2 – 14 mm									
A	Part.No.	Form	L1	L2	L3	L4	D1	D2	D3	Balanced	kg
187	300 214Z 650 0	A	85	103	142	161	30	50	53	20.000 G=2,5	1,9
HSK63 A											
120	300 614Z 663 0	A	39	56	71	94	30	50	53	20.000 G=2,5	1,4
142	300 514Z 663 0	A	61	78	93	116	30	50	53	20.000 G=2,5	1,5
178	300 214Z 663 0	A	85	103	129	152	30	50	53	20.000 G=2,5	1,9



other lengths see page 33

### APC 20

HSK50 A		2 – 20 mm									
A	Part.No.	Form	L1	L2	L3	L4	D1	D2	D3	Balanced	kg
101	300 120Z 650 0	A	20	31	56	75	40	53		20.000 G=2,5	1,1
HSK63 A											
92	300 120Z 663 0	A	20	31		66	40	53		20.000 G=2,5	1,3
HSK63 F											
92	300 120F 663 0*	F	20	31		66	40	53		20.000 G=2,5	1,3
HSK80 A											
98	300 120Z 680 0	A	18	38		72	40	63		20.000 G=2,5	1,8
HSK100 A											
100	300 020Z 610 0	A	18	38	43	71	40	63	70	20.000 G=2,5	3,8



\*delivery includes sealing plug in HSK

HSK63 A		2 – 20 mm									
A	Part.No.	Form	L1	L2	L3	L4	D1	D2	D3	Balanced	kg
120	300 620Z 663 0	A	48	56	71	94	40	50	53	20.000 G=2,5	1,6
142	300 520Z 663 0	A	69	81		116	40	53		20.000 G=2,5	1,7
178	300 220Z 663 0	A	94	105		152	40	53		20.000 G=2,5	2,0
HSK100 A											
150	300 820Z 610 0	A	48	68	93	121	40	63	70	20.000 G=2,5	4,2
186	300 920Z 610 0	A	84	104	129	157	40	63	70	20.000 G=2,5	4,5



other lengths see page 33

## APC 25

### HSK63 A

16 – 32 mm

A	Part.No.	Form	L1	L2	L3	L4	D1	D2	D3	Balanced	kg
132	300 025Z 663 0	A	90	106			63			20.000 G=2,5	2,2

### HSK80 A

137	300 025Z 680 0	A	111				63			20.000 G=2,5	2,5
-----	----------------	---	-----	--	--	--	----	--	--	--------------	-----

### HSK100 A

139	300 025Z 610 0	A	110				70			20.000 G=2,5	4,7
-----	----------------	---	-----	--	--	--	----	--	--	--------------	-----

### HSK125 A

145	300 025Z 612 0	A	116				70			20.000 G=2,5	6,0
-----	----------------	---	-----	--	--	--	----	--	--	--------------	-----

other lengths see page 34



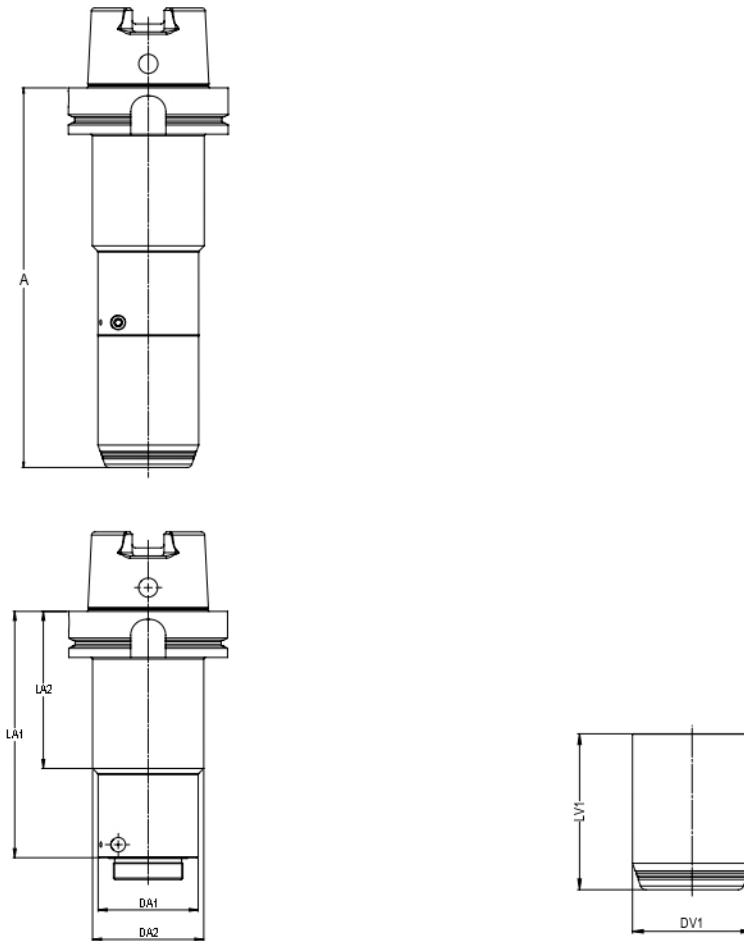
# APC 25

with fine-balancing holes 6xM6

## Procedure:

1. Choose shank-side and hood according Your needs, all dimensions can be taken from the tables.
2. Send this to info@albrecht-germany.com with Art. No. of both parts plus the projecting length.
3. We will prepare an offer with a dimensional sketch.

Example sketch



16 – 32 mm

Art. No.  
hood

	137 0025 000 0	137 0025 000 1
DV1	63	70
LV1	82,5	82,5

APC-Variation  
A

160	180
203	-
289	-

	Art. No. shank	DA1	DA2	LA1	LA2
HSK100 A	135 120Z 610 0	70	-	77,5	-
HSK100 A	135 320Z 610 0*	63	-	121	-
HSK100 A	135 220Z 610 0*	63	70	207	100

\*without Fine-balancing-holes 6xM6

## Example:

Shank with HSK100-A, Art. No. 135 120Z 610 0 and hood Art. No. 137 0025 000 0 results a projecting length 160 mm.  
Details 135 120Z 610 0, 137 0025 000 0, projecting length 160 mm.

Further HSK-types and details also shown on pages 20-21.  
Suitable collets see pages 40-45, accessories see page 49.

## Compensating Chuck APC with fine balancing holes 6xM6

Easy exchange of tools by setting of hex-key (see page 49). Maintenance free.

Sealed against coolant and contamination. Slow collet taper angle. Collet with

special coating (see page 36–47). Clamping of tool shanks according to DIN 1835 A,

B and DIN 6535 HB, HA. Coolant tubes see page 83.

### Compensating Adapter

#### HSK63-Form A

Modul	Part.No.	d	L1	L2	L3	L4	D1	D2	D3	Balanced	kg
70	300 M76Z 663 0	70	60							by design	1,3
80	300 M86Z 663 0	80	60							by design	1,4
100	300 M16Z 663 0	100	65							by design	1,9

#### HSK100-Form A

Modul	Part.No.	d	L1	L2	L3	L4	D1	D2	D3	Balanced	kg
70	300 M76Z 610 0	70	55							by design	1,6
80	300 M86Z 610 0	80	55							by design	2,8
100	300 M16Z 610 0	100	65							by design	3,7



## APC 20

### Compensating Chuck

2 – 20 mm

Modul	Part.No.	d	L1	L2	L3	L4	D1	D2	D3	Balanced	kg
70	300 120Z M76 0	70	20	31	72	87	40	53	-	by design	1,1
80	300 120Z M86 0	80	20	31	56	73	40	53	-	by design	1,3

## APC 25

16 – 32 mm

Modul	Part.No.	d	L1	L2	L3	L4	D1	D2	D3	Balanced	kg
100	300 025Z M16 0	100	83	-	97	118	63	-	-	by design	3,1

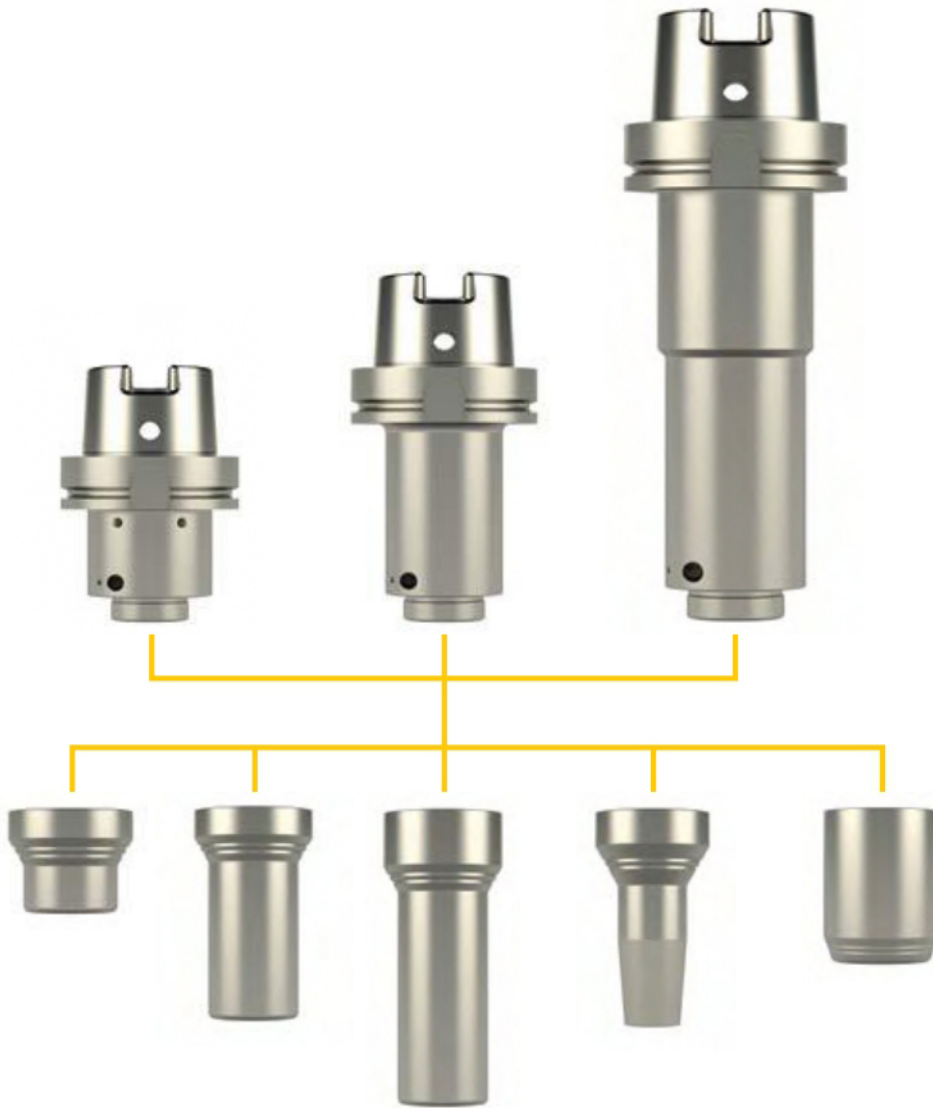


### Adapter sleeve for inner coolant flow

Modul	Part.No.	O-Ring
all	139 5004 001 0	17x1,5

# APC Individual

The configurable APC from the Albrecht modular system.  
Simply select the shank and hood.  
Your individual APC is ready.



## Procedure:

1. Choose shank-side and hood according to Your needs, all dimensions can be taken from the tables.
2. Send this to [info@albrecht-germany.com](mailto:info@albrecht-germany.com) with Art. No. of both parts plus the projecting length.
3. We will prepare an offer with a dimensional sketch.

## Example:

Shank-side with HSK63 A, Art. No. 135 220Z 663 0 and hood, Art. No. 137 0320 000 2 results a projecting length 180 mm.  
Details: 135 220Z 663 0, 137 0320 000 2, projecting length 180 mm.

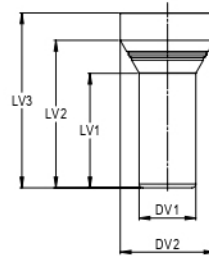
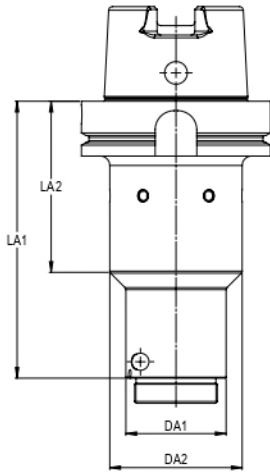
Further HSK-types and details also shown on pages 20-21.

Suitable collets see pages 40-45, accessories see page 49.

APC individually also possible for SK, MAS-BT and Polygon on request.

# APC 14/20

APC 14/20, hood cylindrical precision chuck APC, DIN 69893 (DIN ISO 12164)  
with fine-balancing holes 6xM6



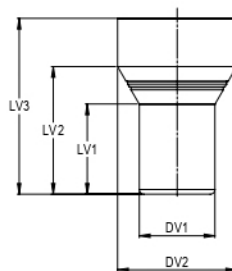
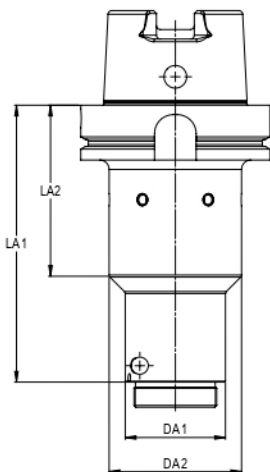
2 – 14 mm  
Art. No. hood

	137 0114 000 1	137 0314 000 0	137 0214 000 0
DV1	30	30	30
DV2	50	50	50
LV1	11	61	85
LV2	28	78	103
LV3	43	92,5	129

	Art. No. shank	DA1	DA2	LA1	LA2
HSK63 A	135 220Z 663 0	53	-	87	-
HSK63 A	135 120Z 663 1	53	-	107	-
HSK80 B	135 020B 680 0*	53	-	49	-
HSK100 A	135 120Z 610 0	70	-	77,5	-
HSK100 A	135 320Z 610 0*	63	-	121	-
HSK100 A	135 220Z 610 0*	63	70	207	100

APC-Variation A		
130	180	216
150	200	236
92	142	178
120	170	206
164	213	250
250	299	336

\*without Fine-balancing-holes 6xM6



2 – 20 mm  
Art. No. hood

	137 0020 000 3	137 0020 000 2	137 0320 000 2	137 0320 000 1	137 0220 000 1	137 0220 000 2
DV1	40	40	40	40	40	40
DV2	53	63	53	63	53	63
LV1	20	18	69	48	94	84
LV2	31	38	81	68	105	104
LV3	43	43	92,5	93	129	129

	Art. No. shank	DA1	DA2	LA1	LA2
HSK63 A	135 220Z 663 0	53	-	87	-
HSK63 A	135 120Z 663 1	53	-	107	-
HSK80 B	135 020B 680 0*	53	-	49	-
HSK100 A	135 120Z 610 0	70	-	77,5	-
HSK100 A	135 320Z 610 0*	63	-	121	-
HSK100 A	135 220Z 610 0*	63	70	207	100

APC-Variation A					
130	-	180	-	216	-
150	-	200	-	236	-
92	-	142	-	178	-
120	120	170	171	206	207
164	164	213	214	250	250
250	250	299	200	336	336

\*without Fine-balancing-holes 6xM6

## Albrecht MQL, minimum quantity lubrication

In combination with Central Coolant Collets, see page 41 and 43.

### DIN 69893 HSK 50 Form A (300 014Z 650 0 and 300 120Z 650 0)

$\emptyset$	MQL Length screw Part.No.	Coolant tube 1-channel Part.No.	Coolant tube 2-channel Part.No.
4 - 6	132 0004 000 3	139 0008 650 2	139 0004 650 2
8	132 0008 000 3	139 0008 650 2	139 0004 650 2
10	132 0010 000 3	139 0008 650 2	139 0004 650 2
12	132 0012 000 3	139 0008 650 2	139 0004 650 2
14	132 0014 000 3	139 0008 650 2	139 0004 650 2
16	132 0016 000 3	139 0008 650 2	139 0004 650 2
18	132 0018 000 3	139 0008 650 2	139 0004 650 2
20	132 0020 000 3	139 0008 650 2	139 0004 650 2



### DIN 69893 HSK 63 Form A (300 014Z 663 0 and 300 120Z 663 0)

$\emptyset$	MQL Length screw Part.No.	Coolant tube 1-channel Part.No.	Coolant tube 2-channel Part.No.
4 - 6	132 0004 000 3	139 0008 663 2	139 0004 663 2
8	132 0008 000 3	139 0008 663 2	139 0004 663 2
10	132 0010 000 3	139 0008 663 2	139 0004 663 2
12	132 0012 000 3	139 0008 663 2	139 0004 663 2
14	132 0014 000 3	139 0008 663 2	139 0004 663 2
16	132 0016 000 3	139 0008 663 2	139 0004 663 2
18	132 0018 000 3	139 0008 663 2	139 0004 663 2
20	132 0020 000 3	139 0008 663 2	139 0004 663 2



### DIN 69893 HSK 80 Form A (300 020Z 680 0)

$\emptyset$	MQL Length screw Part.No.	Coolant tube 1-channel Part.No.	Coolant tube 2-channel Part.No.
4 - 6	132 0004 000 3	139 0008 680 2	139 0004 680 0
8	132 0008 000 3	139 0008 680 2	139 0004 680 0
10	132 0010 000 3	139 0008 680 2	139 0004 680 0
12	132 0012 000 3	139 0008 680 2	139 0004 680 0
14	132 0014 000 3	139 0008 680 2	139 0004 680 0
16	132 0016 000 3	139 0008 680 2	139 0004 680 0
18	132 0018 000 3	139 0008 680 2	139 0004 680 0
20	132 0020 000 3	139 0008 680 2	139 0004 680 0



### DIN 69893 HSK 100 Form A (300 020Z 610 0)

$\emptyset$	MQL Length screw Part.No.	Coolant tube 1-channel Part.No.	Coolant tube 2-channel Part.No.
4 - 6	132 0004 000 3	139 0008 610 2	139 0004 610 0
8	132 0008 000 3	139 0008 610 2	139 0004 610 0
10	132 0010 000 3	139 0008 610 2	139 0004 610 0
12	132 0012 000 3	139 0008 610 2	139 0004 610 0
14	132 0014 000 3	139 0008 610 2	139 0004 610 0
16	132 0016 000 3	139 0008 610 2	139 0004 610 0
18	132 0018 000 3	139 0008 610 2	139 0004 610 0
20	132 0020 000 3	139 0008 610 2	139 0004 610 0



extended coolant tubes for APC-Chucks with longer gage-length on request

**Mounting System Base Unit****Part.No.**

730 1000 000 0

**Adaptor****Part.No.****ISO 7388-1 + ISO7388-2**

SK30 + BT30

730 1000 230 0

SK40 + BT40 + CAT40

730 1000 240 0

SK50 + BT50 + CAT50

730 1000 250 0

**DIN 69893**

HSK50 Form A+C

730 1000 650 0

HSK63 Form A+C

730 1000 663 0

HSK80 Form A+C

730 1000 680 0

HSK100 Form A+C

730 1000 610 0

**ISO 26623-1**

PSC50

730 1000 9C5 0

PSC63

730 1000 9C6 0

PSC80

730 1000 9C8 0





# Accessories HSK

## Coolant tubes

### DIN 69893 (HSK)

	Part.No.
Coolant tubes HSK-A50	139 0002 650 0
Coolant tubes HSK-A63	139 0002 663 0
Coolant tubes HSK-A80	139 0002 680 0
Coolant tubes HSK-A100	139 0002 610 0



## Key with T-handle

	Part.No.
for coolant tubes HSK-A50	139 0020 650 0
for coolant tubes HSK-A63	139 0020 663 0
for coolant tubes HSK-A80	139 0020 680 0
for coolant tubes HSK-A100	139 0020 610 0

